

2022

SCHOOL BUS SURVEY



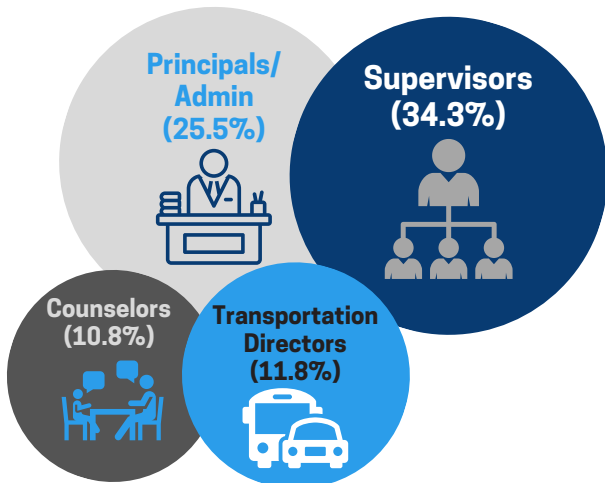
In the summer of 2022, Busing on the Lookout (BOTL) collected survey data from over 400 school transportation professionals (e.g., bus drivers, transportation directors, bus aides) at school transportation conferences across the United States. Participants received a brief pre-survey prior to BOTL's presentation and a more in-depth post-survey asking them about their experiences on the ground when it comes to recognizing and reporting grooming, trafficking and/or exploitation.

1 in 3 school transportation professionals have suspected that a student was at risk of being groomed and/or abused.

1 in 4 school transportation professionals have reported an incident of suspected child abuse, grooming, or trafficking.

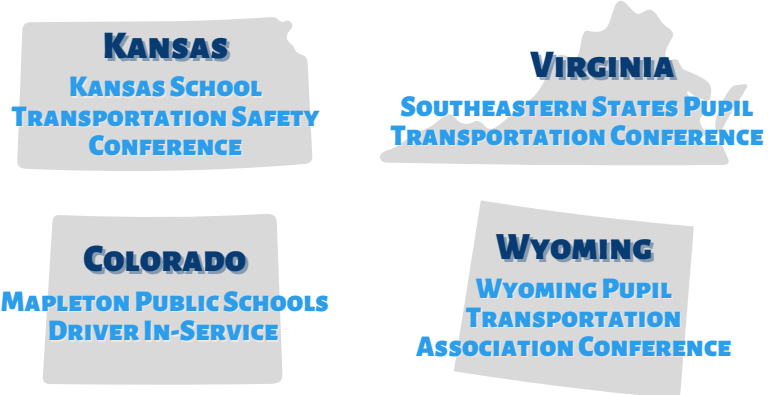
School transportation professionals reported feeling significantly more equipped to recognize and report human trafficking after receiving training from BOTL.

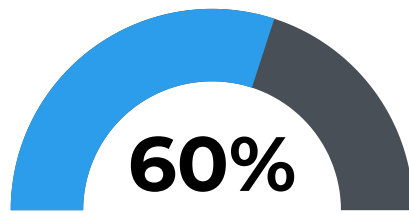
WHO ARE TRANSPORTATION PROFESSIONALS REPORTING SUSPECTED TRAFFICKING/ABUSE TO?



WHERE IS OUR DATA COMING FROM?

Surveys were administered at events in Colorado, Kansas, Virginia, and Wyoming. Participants came from a mix of urban, suburban, and rural areas. This issue crosses all community types.





of school transportation professionals **have observed at least one sign** that we include in our red flag indicators of human trafficking.



The 5 Red Flag Indicators Most-Frequently Observed:

1. **Inappropriate dress for the weather or school (59.2%)**
2. **Mood swings, such as frequent crying, temper tantrums, or clingy behavior (46.1%)**
3. **Symptoms of anger, panic, irritability, phobia, or hyperactivity that weren't there before (35.9%)**
4. **Students who have begun to accumulate frequent absences (32.2%)**
5. **Any mention that a student has an older boyfriend (28.6%)**

Note: While this doesn't mean that every red flag observed was a trafficking situation, it does mean that school transportation professionals are noticing the types of things that could help them recognize trafficking with the proper training.

WHAT SCHOOL TRANSPORTATION PROFESSIONALS SAID ABOUT BOTL TRAINING:

"An eye-opener. Very useful. We need to set protocols for our school system."

"Wallet cards are great--all drivers should have them."

"We have to be more observant, inform our fleet, and provide resources."

THE BOTTOM LINE:

School bus drivers and other school transportation professionals are positioned to recognize and report human trafficking in the course of their everyday jobs. In fact, survey feedback shows that they already are. BOTL's free, industry-specific training materials can help school transportation staff understand the issue and know how to respond/report when they are noticing signs of grooming, trafficking and exploitation.

To learn more, visit www.busingonthelookout.org.